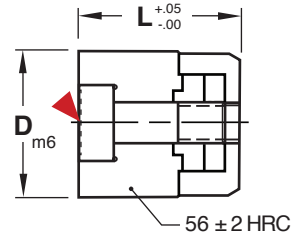
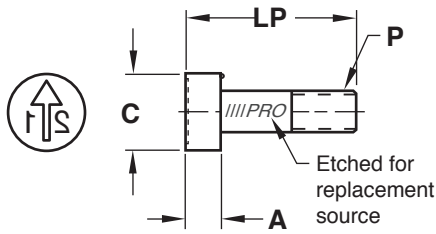


DATE STAMPS

COMPACT LOCKING DETENT SERIES



PLUGS



M 420 Stainless (1.4034) **H** 54-58 HRC

| CATALOG NUMBER | C | A | LP | P | Engraving Depth (Arrow) |
|----------------|------|-----|------|-------------|-------------------------|
| DTNP03-21 | 1.6 | 1.0 | 3.8 | M1 x 0.25 | .20 |
| DTNP04-21 | 2.5 | 1.2 | 4.8 | M1.4 x 0.2 | .30 |
| DTNP05-21 | 3.1 | 2.0 | 7.8 | M1.6 x 0.2 | .40 |
| DTNP06-21 | 3.1 | 2.0 | 7.8 | M1.6 x 0.2 | .40 |
| DTNP08-21 | 4.4 | 2.5 | 9.8 | M2.3 x 0.25 | .40 |
| DTNP10-21 | 5.2 | 3.0 | 11.8 | M2.5 x 0.35 | .40 |
| DTNP12-21 | 6.2 | 3.0 | 13.8 | M3 x 0.35 | .60 |
| DTNP16-21 | 8.2 | 3.5 | 13.8 | M4 x 0.35 | .60 |
| DTNP20-21 | 11.0 | 4.5 | 15.8 | M4 x 0.35 | .60 |

RINGS



| CATALOG NUMBER | D | L | B Max From Graphic Below | Engraving Depth |
|----------------|----|----|-----------------------------|-----------------|
| DTN03 | 3 | 4 | 1.6 | .10 |
| DTN04 | 4 | 5 | 2.2 | .15 |
| DTN05 | 5 | 8 | 3.2 | .20 |
| DTN06 | 6 | 8 | 3.2 | .20 |
| DTN08 | 8 | 10 | 4.2 | .20 |
| DTN10 | 10 | 12 | 5.2 | .20 |
| DTN12 | 12 | 14 | 6.2 | .25 |
| DTN16 | 16 | 14 | 8.2 | .25 |
| DTN20 | 20 | 16 | 10.2 | .30 |

▶ CAD insertion point

Additional Plug and Ring Options: Specify catalog number as shown below for the different style plugs and rings.

Plug Styles: Recessed Lettering

Arrow Only
Cat #: DTNP-Diam-AO
Ex.: DTNP05-AO

C
Cat #: DTNP-Diam-C
Ex.: DTNP05-C

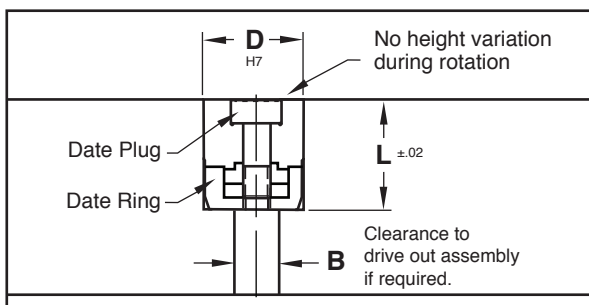
Ring Styles: Recessed Lettering

0 - 9 Cat #: DTNN-Diam Ex.: DTNN05
 A - L Cat #: DTNA-Diam Ex.: DTNA05

0 - 30 Cat #: DTNT-Diam Ex.: DTNT05
 M - X Cat #: DTNZ-Diam Ex.: DTNZ05

Blank Cat #: DTN-Diam-B Ex.: DTN05-B
 Years Cat #: DTNY-Diam-Starting Year* Ex.: DTNY05-21

Installation Guidelines:



Maximum mold temperature: 572° F (300° C)
Maximum molding pressure: 20,000 psi/2,000 bar

*Where years are specified, any year can be ordered by changing the suffix. Example DTNP05-22 or DTNY05-23.

To create Date Stamps for days, purchase both the 0-30 ring (DTNT) and the 0-9 ring (DTNN) and the desired plugs.

Special configurations are available.
Contact Customer Service for more information.