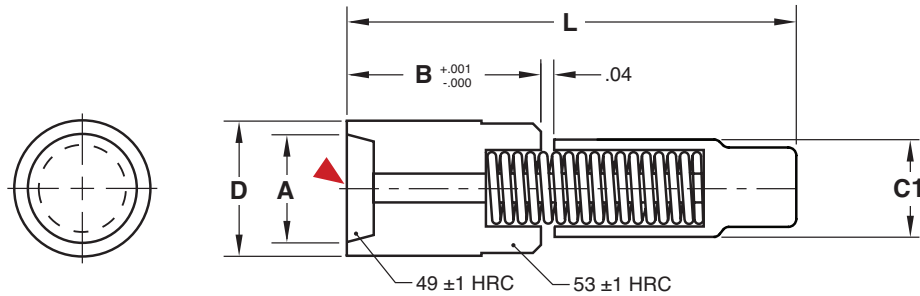


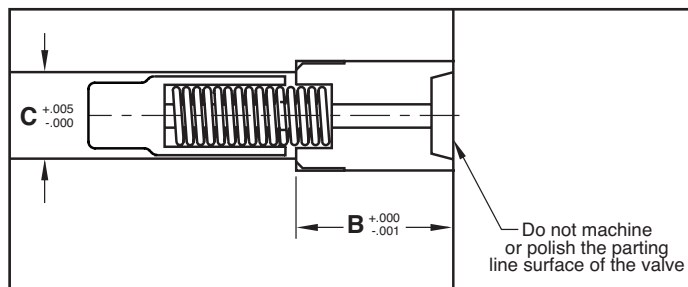


AIR VALVES



M Body: 420 Stainless Steel, Plunger: Tool Steel, coated for lubricity **H** Body: 52-54 HRC, Plunger: 48-50 HRC ▶ CAD insertion point

CATALOG NUMBER	D		A		B		C1		L		
	MM	Inch	MM	Inch	MM	Inch	MM	Inch	MM	Inch	
AV-08	8	.3149	+0.006 +0.002	6.5	.256	11	.433	6	.24	24	1.0
AV-12	12	.4724	+0.007 +0.003	9.7	.382	18	.708	8	.32	34	1.4
AV-18	18	.7086	+0.007 +0.003	14.8	.583	22	.866	12	.47	46	1.8

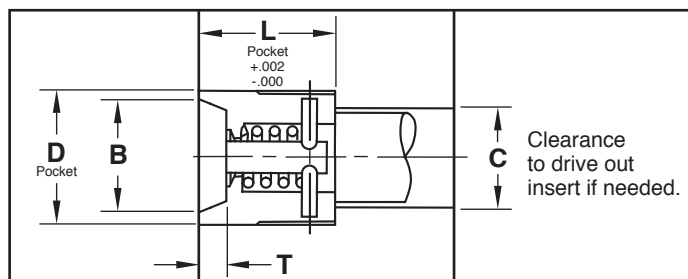


Suggested Machining Diameters:

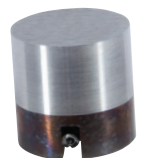
CATALOG NUMBER	C
AV-08	.265
AV-12	.354
AV-18	.551

Specifications:

- Pressure Required: 29-140 psi
- Maximum Mold Temperature: 265°F (130° C)



AIR POPPETS



Specifications:

- Pressure Required: 80-100 psi
- Maximum Mold Temperature: 285°F (140° C)
- Repair kit includes spring and pin.

M 420 Stainless Steel **H** 40-44 HRC

AIR POPPET CATALOG NUMBER	D ±.0002	B	C	T	L	REPAIR KIT CATALOG NUMBER
APV-25	.250	.215	3/16	.06	.375	APVR-25
APV-37	.375	.325	9/32	.07	.375	APVR-37
APV-50	.500	.437	3/8	.10	.500	APVR-50
APV-75	.750	.656	9/16	.15	.750	APVR-75
APV-100	1.000	.875	3/4	.20	1.000	APVR-100
APV-150	1.500	1.312	1	.30	1.500	APVR-150