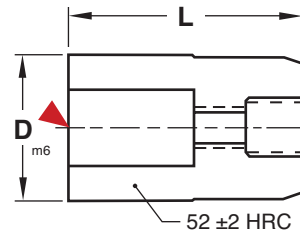
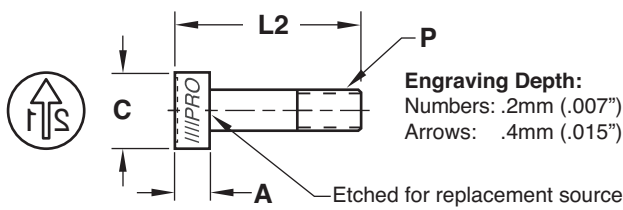


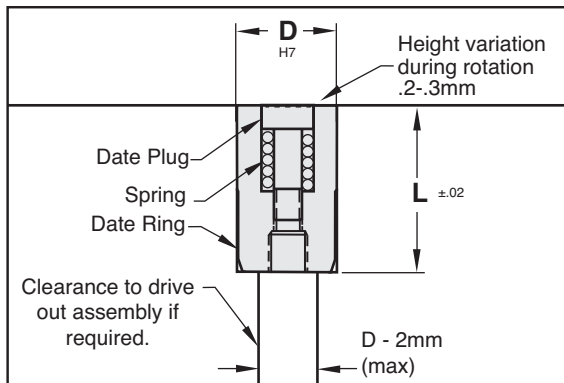


DATE STAMPS

20 SERIES: 20MM LENGTH



Installation Guidelines:



Maximum mold temperature: 285° F (140° C)

For other date plugs, modify catalog number for the year required. Example: DLP06-22.

Plugs include springs and replacements are available.

PLUGS



M 420 Stainless (1.4034) **H** 50-54 HRC

CATALOG NUMBER	C	A	L2	P	ARROW ONLY
DLP06-21	3.1	3.0	13	M1.6x0.20	DLP06-AO
DLP08-21	4.6	4.0	14	M2.5x0.35	DLP08-AO
DLP10-21	4.6	4.0	14	M2.5x0.35	DLP10-AO
DLP16-21	8.2	3.5	14	M4x0.35	DLP16-AO

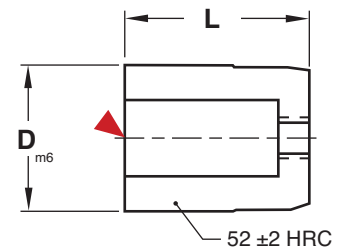
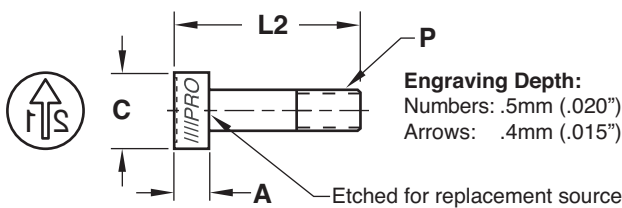
▶ CAD insertion point

RINGS



CATALOG NUMBER	D	L
DL06	6	20
DL08	8	
DL10	10	
DL16	16	

D SERIES: DEEP ENGRAVING



PLUGS

M 420 Stainless (1.4034) **H** 50-54 HRC

CATALOG NUMBER	C	A	L2	P	ARROW ONLY
DCP10D-21	5.2	3.0	12	M2.5x0.35	DCP10-AO
DCP12D-21	6.2	3.0	14	M3x0.35	DCP12-AO
DCP16D-21	8.2	3.5	14	M4x0.35	DCP16-AO
DCP20D-21	11.0	4.5	16	M4x0.35	DCP20-AO

For other date plugs, modify catalog number for the year required. Example: DCP16D-22.

Maximum mold temperature: 285° F (140° C).

Plugs include springs and replacements are available.

RINGS

CATALOG NUMBER	D Ring Diameter	L
DC10-D	10	12
DC12-D	12	14
DC16-D	16	14
DC20-D	20	16

▶ CAD insertion point